



WA Referrer Booklet

PRESENTED BY



Government of Western Australia
Child and Adolescent Health Service



Government of Western Australia
WA Country Health Service



About Inklings

Inklings is a program for babies aged 6-18 months who are showing early differences in their social interaction and communication development.

Backed by decades of rigorous scientific research, Inklings uses short videos of a parent interacting with their baby to help them to better understand the different ways that their baby communicates.

With the guidance of a trained practitioner, caregivers are supported to allow their baby to direct their own play and lead interactions with others while building on their own strengths as a responsive communication partner for their baby.

The 10-session program is delivered fortnightly within six months by a professional with specific training in the Inklings Program.

Backed by research

Inklings is an early childhood program based on the iBASIS-VIPP program. iBASIS-VIPP has been trialled in two clinical studies — one in the United Kingdom of 54 babies, and one in Australia with more than 100 babies. The clinical trials found very similar results.

The multi-site Australian four-year randomised clinical trial, led by The Kids Research Institute Australia (The Kids), investigated the impacts of iBASIS-VIPP on babies who had shown early signs of autism, such as reduced eye contact, imitation, or social smiling. Over a period of five months, half received the program, while a control group received community therapy as usual.

The study found that, at age three years, children who received the program had fewer social communication difficulties, and parents reported increased sensitivity to their baby's unique communication.



Inklings in WA

The findings from the clinical trials suggest that starting intervention within the first 18 months of life provides the greatest potential to improve outcomes for children who are showing early social interaction and communication differences.

The Inklings Program is funded in Western Australia through the National Disability Insurance Scheme (NDIS) as part of a new partnership between NDIS, The Kids, Child and Adolescent Health Service and WA Country Health Service, to support babies showing early social and communication differences.

It aims to deliver The Kids' Inklings Program to 700 babies in WA over three years. This also includes the rollout of the program to regional and remote locations within WA. Inklings sessions are delivered in-clinic or via telehealth.

Eligibility criteria

There are three eligibility requirements to be part of Inklings in WA:



1

Age

Babies must be between the ages of 6-18 months at the commencement of the Inklings Program.



Early referral is strongly encouraged, ideally prior to the baby turning 16 months of age.



At a maximum, referred babies will be screened up to 17.5 months. However, this may not be sufficient time to complete the screening requirements and be seen prior to ageing out.



2

State of residency

For the purposes of Inklings in WA, babies must be based in Western Australia for the duration of the program, approximately five-to-six months.



3

ASQ:SE-2 score

Babies must score in the 'monitor' or 'refer' zone on an ASQ:SE-2 questionnaire.

Further information on the ASQ: SE-2

The ASQ:SE-2 — or Ages & Stages Questionnaire, Social-Emotional Second Edition — is a screening tool used to identify potential differences or delays in a baby's social, emotional and communication skills.

It consists of a series of questions asked of the main caregiver which relate to their baby's behaviours and captures whether they have any concerns about their baby's development. The questionnaire aims to identify babies with social-emotional or communication differences, development delays such as sleeping and eating and any concerns from the main caregivers.

Note, an ASQ:SE-2 is not required to complete a referral. The Inklings Team can facilitate the completion of this with the caregiver.

If baby does not score in the 'monitor' or 'refer' zone on an ASQ:SE-2 questionnaire, but you recommend the baby will benefit from the Inklings Program, a follow-up ASQ:SE-2 questionnaire can be completed six weeks post the previous questionnaire being completed.





Referral information

i I'm a Child Health Nurse at Child and Adolescent Health Service or WA Country Health Service, how do I refer to Inklings?

- 1** Identify that a baby in Western Australia aged 6-18 months may benefit from support in their social interaction and communication development.
- 2** Complete the ASQ:SE-2 questionnaire with the family as you usually would.
- 3** If the ASQ:SE-2 questionnaire result is in the 'monitor' or 'refer' zone, refer to the relevant Child Development Service to complete the process (if the parent/caregiver provides consent to do so).
- 4** The CDS intake team will then facilitate the referral to Inklings by following internal processes.

i I'm a GP or other health professional, how do I refer to Inklings?

- 1** Identify that a baby aged 6-18 months may benefit from support in their social interaction and communication development.
- 2** Discuss the Inklings Program with the family.
- 3** If the family is interested in being referred to Inklings, refer via inklings.org.au/wa.

i Can a parent self-refer to Inklings?

Yes. Submit an expression of interest via inklings.org.au/wa.

For further information, please contact

E: inklings@thekids.org.au **T:** +61 8 6319 1155 **W:** inklings.org.au/wa

FAQs for referrers

i Is there any cost for families who participate in Inklings in WA?

No. There are no out-of-pocket expenses for eligible families participating in Inklings in Western Australia.

i Where can families participate in Inklings in WA?

Statewide. Inklings is available at several locations throughout Western Australia, as well as via telehealth.

i Is telehealth available?

Yes. The program has been carefully considered to ensure it can be delivered via telehealth. Inklings uses video feedback so it is well suited to telehealth delivery. Families require internet access to participate in telehealth.

i What is the current wait time to enrol a family in Inklings in WA?

Wait times are currently minimal. An update on expected wait times can be provided to the family and referrer upon enquiry.

i My client doesn't speak English. Is an interpreter service available?

Yes. Interpreter services are available for anyone who would prefer assistance in a different language and can be either over-the-phone or in person. Please let us know if this is the case, and we can assist.

i Do I need to complete the ASQ:SE-2?

The questionnaire is completed by the baby's main caregiver and captures information about their baby's behaviour and any concerns the caregiver may have about their development. If the ASQ:SE:2 hasn't been provided by the referrer, the Inklings Team can facilitate the completion of this with the caregiver.

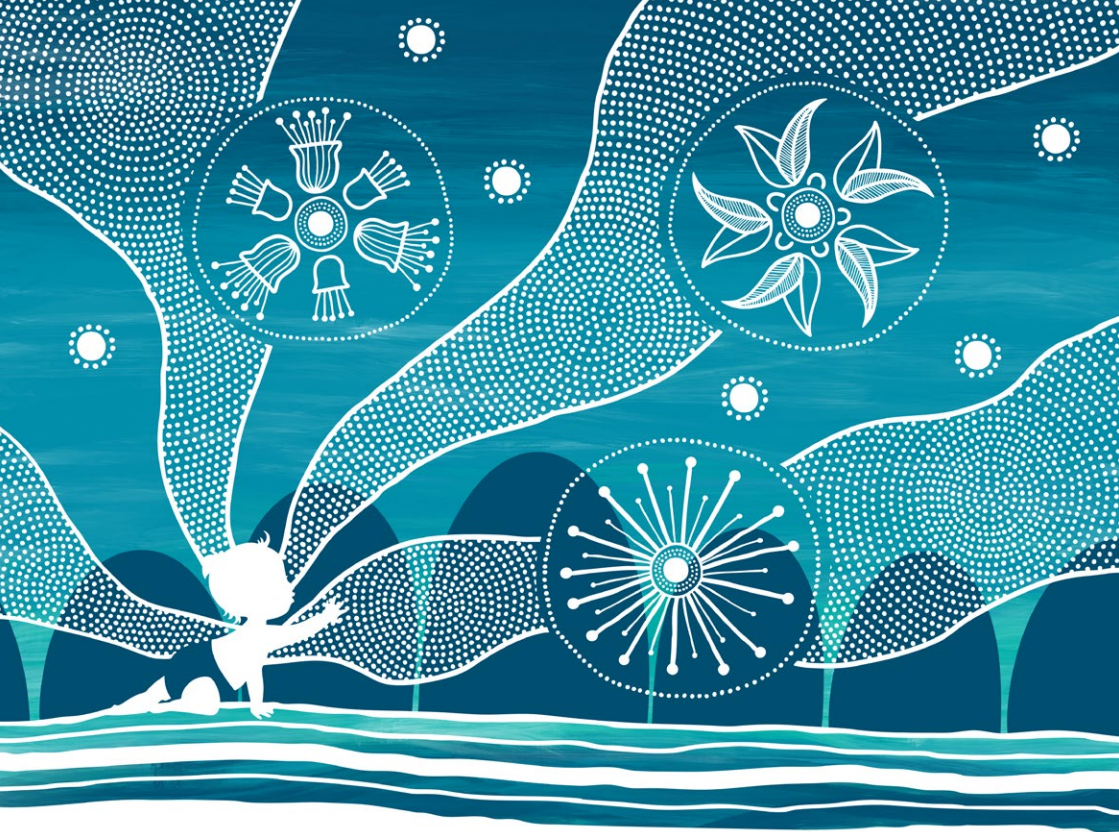
i Does this program consider the specific needs of culturally and linguistically diverse (CALD) communities?

Yes. Communication with caregivers about the provision of the Inklings Program will be responsive to their needs and provided in the language, mode of communication that the caregiver is most likely to understand. This includes for caregivers from a range of populations groups including CALD communities. Interpreters are available at no out of pocket expense, and information about Inklings is available in a range of languages.

i Are there Inklings resources available for my practice?

Yes. There are a variety of Inklings in WA resources (flyers, brochures, postcards) available to download on the 'Resources' tab of inklings.org.au/wa. Please contact inklings@thekids.org.au to request hardcopies delivered to your practice.





For further information, please contact

E: inklings@thekids.org.au **T:** +61 8 6319 1155 **W:** inklings.org.au/wa

The
KIDS
RESEARCH INSTITUTE
AUSTRALIA

